

COMPACT TRACK LOADERS
TR270 | TR320 | TV380

CASE
CONSTRUCTION



**BIG ON POWER,
BIG ON COMFORT**

www.casece.com
EXPERTS FOR THE REAL WORLD
SINCE 1842

CASE COMPACT TRACK LOADERS: OUTSTANDING PERFORMANCE AND RELIABILITY!

GET MORE DONE

Climb inside a new Case compact track loader (CTL) and you'll feel the difference. Engineered from the ground up, this new line-up of equipment delivers more power. And that's just the start.

Our new CTLs delivers exceptional bucket breakout force (up to 38,7 kN) and hinge-pin height (up to 3.342 mm). All three models deliver superior horsepower, giving you the muscle to get the job done faster.

Plus, they'll run all day long, thanks to improved fuel efficiency and new 76- to 96.5-lt fuel tanks. One demonstration will prove it's time to trade up.



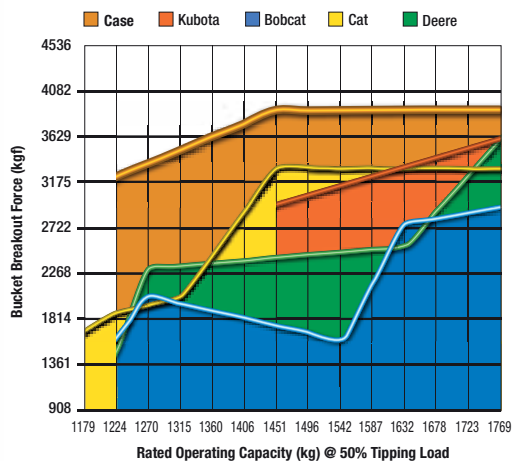
Your operators will be comfortable and productive in the spacious cab.

COMFORT FOR THE LONG HAUL

There's no comparison. Our engineers designed a cab that delivers more room, visibility, comfort and control.

Not only are they as much as 25 percent larger, but they also feature dozens of upgrades, such as optional heated air-suspension seats, air conditioning, a removable front door and side windows.

Our revolutionary ultra-narrow wire side-screen design and larger glass windows give you more visibility. With the Case-exclusive side lighting, you'll get more done - day or night.



Compare us to the competition. You'll feel the superior breakout force.



SIMPLE AND ROBUST UNDERCARRIAGE

Our reliable undercarriage is engineered to hold fast on steep slopes and take command of muddy or sandy terrain. The undercarriage has a rigid track frame with fewer moving parts, so it is more durable and easier to maintain than suspension track systems.

The technology on our rollers and idlers reduces maintenance costs and increases undercarriage life. Plus, our new, narrow chassis width makes it easy to load and unload on trailers.

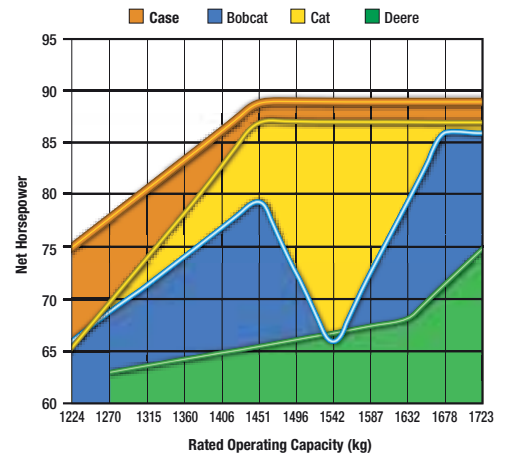


Designed to take on the toughest challenges, these new CTLs are engineered to boost your productivity and profits.

MUSCLE TO SPARE

Case compact track loaders have the muscle to get the job done - with rated operating capacities up to 1.948 kg*. Our radial-lift TR270 and TR320 models are engineered for digging, prying and pushing, while the vertical-lift TV380 is for load-and-carry jobs. Plus, we deliver superior hinge pin height - which positions the bucket higher to load trucks faster and easier.

* With counter weights



(Information gathered from manufacturers' published specifications.)
You get more horsepower with Case.



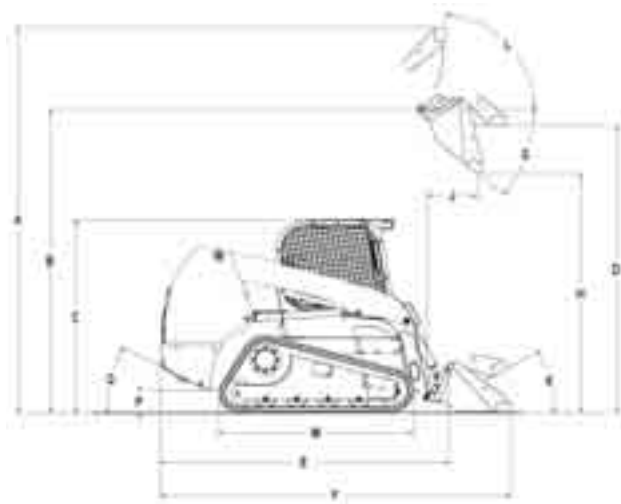
	TR270	TR320	TV380
PERFORMANCE SPECS			
Rated Operating Capacity 50%	1.225	1.451	1.723
ROC with counterweights 50%	1.280	1.676	1.948
Rated Operating Capacity 35%	859	1.018	1.209
ROC with counterweights 35%	899	1.203	1.394
Tipping Load	2.449 kg	2.902 kg	3.447 kg
Lift Cylinder Breakout Force*	27 kN	34,5 kN	26,8 kN
Bucket Cylinder Breakout Force*	32,3 kN	38,7 kN	33,4 kN
ENGINE			
Engine Brand	FPT	FPT	FPT
Displacement	3.2 l	3.2 l	3.2 l
Gross Horsepower	74 hp @ 2.500rpm	90 hp @ 2.500 rpm	90 hp @ 2.500 rpm
Peak torque	275 Nm @ 1.400 rpm	383 Nm @ 1.400 rpm	383 Nm @ 1.400 rpm
TRAVEL SPEED			
Low Range	8.2 km/h	8.2 km/h	8.2 km/h
High Range (Optional)	12.2 km/h	12.2 km/h	12.2 km/h
HYDRAULIC SYSTEM			
Pump flow	85 LPM	92 LPM	92 LPM
Optional high flow	210 LPM	210 LPM	210 LPM
Relief Pressure	210 bar	210 bar	210 bar
WEIGHTS			
Operating Weight	3.750 kg	4.355 kg	4.625 kg
Shipping Weight	3.615 kg	4.200 kg	4.475 kg
SERVICE CAPACITY			
Fuel Tank	75.5 l	96.5 l	96.5 l

SUPERIOR SERVICEABILITY

Ask your technicians. Case has a reputation for easy-to-maintain and service equipment. The new Case compact track loaders are no exception, with features such as remote-mounted filters, ground-line access for daily maintenance checks and grouped service checkpoints.



* Breakout forces estimated considering both tip and hydraulic limits.



	TR270	TR320	TV380
A. Overall operating height	3.89 m	4.01 m	4.22 m
B. Height to bucket hinge pin	3.12 m	3.21 m	3.34 m
C. Height to top of ROPS	1.99 m	2.04 m	2.04 m
D. Bottom of bucket fully raised	NA	NA	NA
Overall length -			
E. without attachment	2.67 m	2.95 m	2.95 m
F. with bucket	NA	NA	NA
G. Dump angle	39.6°	38.3°	53.5°
H. Dump height with bucket	2.49 m	2.6 m	2.6 m
J. Dump reach @ max. height	0.57 m	0.54 m	0.79 m
Max. attachment rollback -			
K. at ground level	31°	29.7°	34°
L. at full height	98.6°	99.7°	86°
M. Wheelbase	NA	NA	NA
P. Ground clearance	0.20 m	0.24 m	0.24 m
Q. Angle of departure	32°	32°	32°
Overall width	1.68 m	1.93 m	1.93 m

NOTE: CASE provides specific outfits for various countries and many optional fittings (OPT). The illustrations on this or other leaflets may relate to standard or optional fittings. Please consult your CASE dealer for any information in this regard and any possible updating on components. CNH Industrial reserves the right to modify machine specifications without incurring any obligation relating to such changes.